



GALLO GLASS CO. STACK DAMPER SLIDE GATES



CLIENT

Gallo Glass Co.

PROJECT SCOPE

Engineering, Fabrication,
Electrical & Mechanical,
Site Management,
Procurement

INDUSTRY

Manufacturing

LOCATION

Modesto, Calif.



[\(Follow this link to view a video of this project.\)](#)

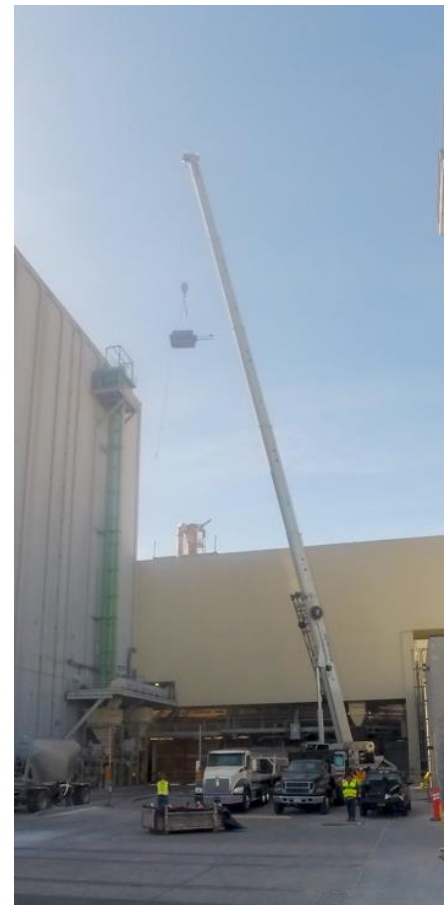
Reverse Engineer, Fabricate and Install

Gallo Glass Company and SilMan Industries have a longstanding, productive relationship. This ongoing collaboration with our Site Services team is focused on keeping their infrastructure and production line running as smoothly as their finished bottles are to the touch.

Our association with Gallo is a shining example of SilMan’s vision of “Community” in action. It begins internally – building and sustaining our in-house capabilities as a multi-discipline, self-performing team – and naturally reaches out to the industrial sector to build authentic, profitable relationships.

About Gallo Glass

Ernest and Julio Gallo founded Gallo Glass in 1958. Their history is a story of continuous evolution of the quality and efficiency of their process, and reducing the environmental impact of their operation. Gallo Glass uses 100% natural materials and is an innovator in the incorporation of recycled products into industrial



glassmaking. In fact, they purchase 30% of all recycled glass in California. Each bottle contains at least 50% of recycled glass.

[Learn more about the history and sustainability efforts at Gallo Glass.](#)



The Situation

Making glass is a tough business, and between the heat of production and the ferocity of the Central California elements, their exterior equipment takes a beating.

In this case, the dampers that allow Gallo's sophisticated controls to precisely manage furnace temperatures were slowly beginning to fail. Specifically, the Slide Gates had become badly rusted and worn, and would soon be approaching immobility.

The Slide Gates control the pressure in the furnace. The mechanical actuator is electronically controlled and operated by a Gallo team member.

The Challenge

Due to the condition of the equipment, replacement, not repair, was the only solution.

Originally installed in 1971, the manufacturer of the Slide Gate, Morgan Construction of Worcester, Massachusetts, is no longer in existence. The SilMan team turned to the Gallo engineering team to

unearth the design schematic in the Gallo archives. However, the drawing set did not include detail or shop drawings.

SilMan Industries and Manufacturing

SilMan Industries proudly serves the facility and material handling needs of the manufacturing community nationwide, including clients such as BASF, Fruit of the Loom, Georgia Pacific, GE Appliances, Kobe Aluminum and Whirlpool.

The Project

In light of the fact that no communication with the original manufacturer was possible and complete drawings were not available, the only path forward was to reverse engineer and fabricate an exact replica of the existing equipment. Moreover, two stacks merge at this location, requiring two separate slide gates.

Engineering and fabrication of the new gates took approximately two months. Additional hardware was also procured, including screwjacks, electrical motors and limit switches.

No downtime for Gallo:

Once the original Slide Gates were removed, the SilMan Site Services team fashioned and installed a temporary manual slide while in the field.

And finally, when the new slide gates were manufactured and requisite parts received, a complete system test was completed in the SilMan shop.

Installation

The stacks are buried deep within the plant's structure. Therefore, a crane was required to both extract and install the pieces, each weighing nearly 4,000 lbs. each. However, the only position for the crane is in the company's raw materials unloading area. Therefore, the installation was to be completed in one day, on a Saturday when there are no deliveries.

The crew arrived at 6:00 am and would work steadily until nearly 6:00 pm.

The first slide gate was installed, connected to controls and tested in place before proceeding to the second, requiring a very patient schedule for the day and tight collaboration with Gallo team members.

The project was an unqualified success, as can be seen by the proud look of our crew, who paused for a quick photo at the end of the day.



Solutions and Results

Typically, the only metrics that matter in any project are 1) on time, 2) under budget, and 3) the client is satisfied. All three were accomplished. At SilMan, however, these are just the beginning of the story.

There are two other key elements that contributed to this outcome:

1. Relationship

The commitment by Gallo and SilMan to nurture this relationship over time creates an environment of trust and productivity. Everybody benefits from transparency and authenticity.

2. Self-Performance

The unique value provided to Gallo on this project is bound up in the variety of skills, knowledge, and experience that reside “Under One Roof” at SilMan. The seamlessly integrated performance of the team encompasses a diversity of skills and experience:

- Project Management & Procurement
- Safety Management
- Site Management



GALLO GLASS CO. STACK DAMPER SLIDE GATES

- Engineering
- Fabrication
- Electrical and Mechanical installation

This list rightly reflects the commitment that SilMan has made to continually expand and sustain in-house capabilities.

Clients like Gallo Glass who deploy a wide array of technologies and rely on high-performing infrastructure, recognize the tremendous value of a multi-skilled partner available with a single phone call.

The Players

Key team members and partners for this project include:

- Scott Wattenbarger, site supervisor
- Justin Neely, electrical installation
- Northern California Millwrights, Local #102
- IBEW Local 595, electricians
- American Crane Rental
- Duncan Bros. Inc., steel fabrication

About SilMan

SilMan Industries (previously SilMan Construction) is based in San Leandro, California. Founded in 2008, the firm operates nationwide in three divisions – Construction, Material Handling and Site Services – and partners with “best in class” companies in the Industrial, Manufacturing, Distribution and Public Works sectors. For more information, please visit www.silmanindustries.com/about.