

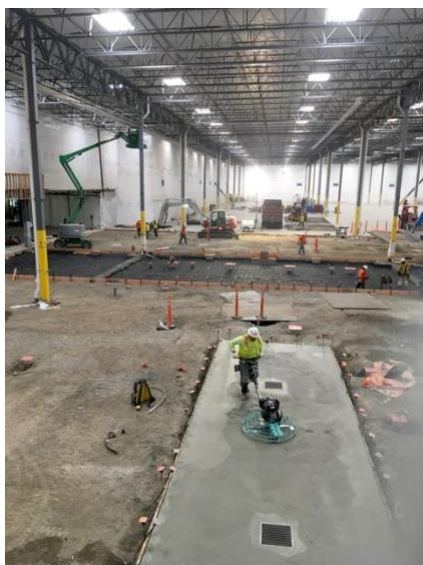


SilMan Industries provided industrial platforms, overhead truss support system, and electrical services to flavored syrup-maker Torani Inc. as part of tenant improvements undertaken at their new headquarters in San Leandro, California.

[\(Follow this link to view a video of this project.\)](#)

The Situation

Torani is a family-owned San Francisco Bay Area company, established in 1925. Today, their products can be found in coffee and cocktails around the world. This project is part of a broader



tenant improvement project as the [company moves their headquarters from South San Francisco to San Leandro](#). The new location is just one mile from our own headquarters.

SilMan was previously contracted to provide civil construction services at its new facility. [You may learn more about that project here](#).

During their initial engagement with the company, SilMan was also tapped to provide additional services for an interior platform system.

This 4500sf equipment platform houses Torani's conveyance and de-palletizing system. The scope also called for truss modifications

throughout the facility to support elevated elements of the production equipment.

Haskell Construction was the General Contractor for the overall tenant improvement project. SilMan has previously worked with Haskell on facility improvements for beverage producers Tropicana, Constellation Brands, and Woodbridge Wines by Robert Mondavi.



Structural and Electrical Infrastructure at Torani

Scope & Description of Work

The fully-implemented solution provides Torani with a fully integrated single-level equipment platform.

SilMan is uniquely prepared for cross-discipline enterprises such as this.

The seamless operational structure at SilMan's creates regular collaboration across all departments and divisions. These interactions have built a broadly-skilled team that easily crosses disciplines and technologies on a daily basis.



In the Torani platform and truss project, these in-house resources provided time and cost savings to the client, flowing from the confluence of material handling, structural, and electrical experience within the team, in the field and back-office.

SilMan's Tupelo-based engineering team worked closely with Torani and Haskell to develop a comprehensive Design

Engineering plan to meet the client's goals. These efforts resulted in detailed system engineering and construction strategies, preparation of approval drawings, structural drawings, and finally, as-built drawings.

Similarly, our Site Services execution teams are equally versed in the peculiarities of structural, mechanical, and electrical installation, with years serving leading manufacturing, parcel, and e-commerce companies.

Skills deployed for the project include:

- Project management and procurement
- Structural Construction
- Electrical Installation
- Site Safety

Key SilMan Team Members

- David Birmingham: Engineering
- Nick Goulart: Site Supervision
- Scott Harding: Site Safety

We were also pleased to partner with [FCP Mezzanines](#) (Wildomar, Calif.) who provided the structural components.

The scope and schedule for the project required a nearly 24-hour a day work cycle: excavation, grading and re-bar by day, and pouring by night.



TORANI, INC. PLATFORM, ELECTRICAL & TRUSS MODIFICATION

SilMan and Beverage Makers

SilMan's Material Handling and Site Services teams are regular players for a variety of beverage providers around the country.

Most recently completing a bottling line for vintner [Opus One Winery](#). Other NorCal winemakers served include Stags Leap and Woodbridge.

We are also currently engaged with HP Hood and the Barry-Wehmiller Design Group on a design-build facility upgrade and new production line in Sacramento, California.

Other beverage providers served including [Gallo Glass](#) and cooperage manufacturers [Brown Forman](#), McGinnis Wood Products, and Speyside.

About SilMan

SilMan Industries (previously SilMan Construction) is based in San Leandro, Calif. Founded in 2008, the firm operates nationwide in three divisions – Construction, Material Handling and Site Services – and partners with “best in class” companies nationwide providing integrated solutions in the Industrial, Manufacturing, Distribution, and Public Works sectors. For more information, please visit www.silmanindustries.com/about.